

Barron Electric's Load Management Program

Load management saves energy and money. Barron Electric members have helped reduce Dairyland Power's system peaks by as much as 70 megawatts in the summer and 140 megawatts in the winter, the equivalent size of a small power plant. It does so by reducing the system's total demand during peak hours, generally between 2 to 6 p.m. in the summer and 5 to 9 p.m. in the winter. Extremely warm or cold weather also creates a high demand on the energy system, with the increase in heating and cooling systems.

Dairyland Power is a member of the Midwest Independent Transmission System Operator (MISO). MISO ensures reliable power and equal access to electric generation and transmission in 15 U.S. states and in Manitoba, Canada. Consequently, Dairyland's use of load management may be affected by the energy demands and weather patterns of the larger MISO region.

Residential Radio Control Strategies

50-Gallon Water Heater Strategy (1A)

Interrupted for a maximum of 4 hours in a 10 hour period, as needed.

85-Gallon (1B), 105-Gallon Water Heater Strategy & Storage Heat Strategy (ETS) (3)

Winter (Approximate Times)

Interrupted 5:30 a.m. until 1:30 p.m.
On from 1:30 p.m. - 3:30 p.m.
Interrupted from 3:30 p.m. - 10:00 p.m.
On from 10:00 p.m. - 5:30 a.m.

Summer (Approximate Times)

On from 8:30 p.m. - 11:30 a.m.
Interrupted from 11:30 a.m. - 8:30 p.m.

This strategy is not interrupted on weekends or holidays, except during full load control events.

Electric Vehicle Charging Station Strategy (3A1)

Interrupted from 7 a.m. - 11p.m., *This strategy is not interrupted on weekends or holidays, except during full load control events.*

Dairy Water Heater Strategy (4A)

Interrupted for 4 hours as needed

Central Air Conditioning Strategy (2C, 2S)

The air conditioner will be cycled, 15 minutes on and 15 minutes off, during peak times.

Dual Fuel Strategy (2A, 2B, 2C, 2W)

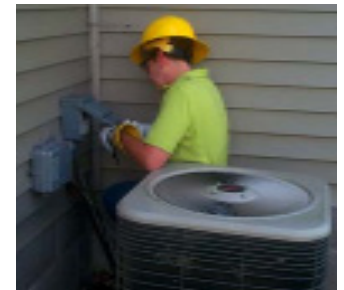
Interrupted for a maximum of 12 hours in a 24 hour period. Usually not longer than 6 hours at a time.

4 Hour-Off Strategy (4B)

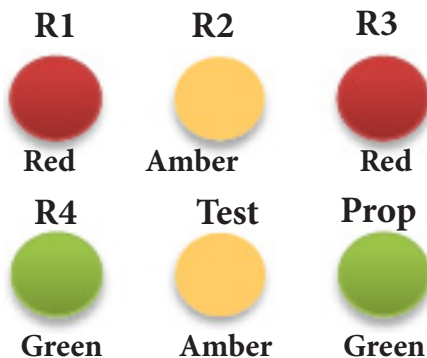
Interrupted for a maximum of 4 hours in a 6 hour period on a as needed basis.

Typical Peak Alert Times:

Winter
4:00 p.m.- 8:00 p.m.
Summer
2:00 p.m. - 6:00 p.m.



Load Management Radio Receiver Model 305/306



Red light on (R1): Water Heater Interrupted
Amber light on (R2): Dual Fuel - Electric Heat Interrupted
Red light on (R3): Electric Storage Heating Interrupted
Green light on (R4): Control Alert
Green light (Prop) Receiver is operating properly
Prop light is on 5:30 a.m. to 11 p.m.

If you are out of hot water, please check your circuit breaker, fuse or reset button on water heater before calling BEC.



For load status information, visit Barron Electric's website at barronelectric.com. Click on the load status icon on the home page. Barron Electric appreciates your participation in the load management program!



BARRON
Electric
COOPERATIVE

A Touchstone Energy® Cooperative
800-322-1008 | barronelectric.com