

## Notifying Members of ROW Clearing

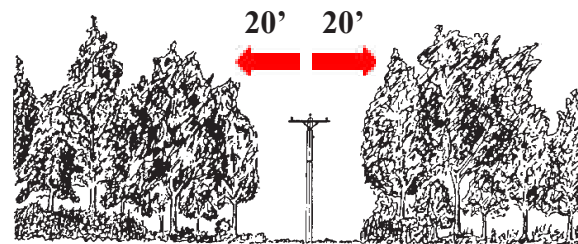
Members in townships to be cleared receive an orange postcard explaining the program and advising them to return the card if there is a concern. The card indicates that during the next several months, contractors working for Barron Electric will be clearing right-of-way in the members' area. In most townships, property owners also receive a notification of ROW clearing in their property tax statement. The contractor leaves a door hanger prior to maintaining the property, and advertisements are published in local newspapers.

## Abandoned Fences

The cooperative encourages members to remove abandoned fences, thereby reducing the additional costs associated with hand-clearing. Our crews will make every effort to avoid damage to maintained fences within right-of-ways, and make repairs when damage occurs. However, if fences in ROW are not routinely maintained by property owners, Barron Electric and contractors representing Barron Electric cannot accept the responsibility of fence repair due to age and normal deterioration.



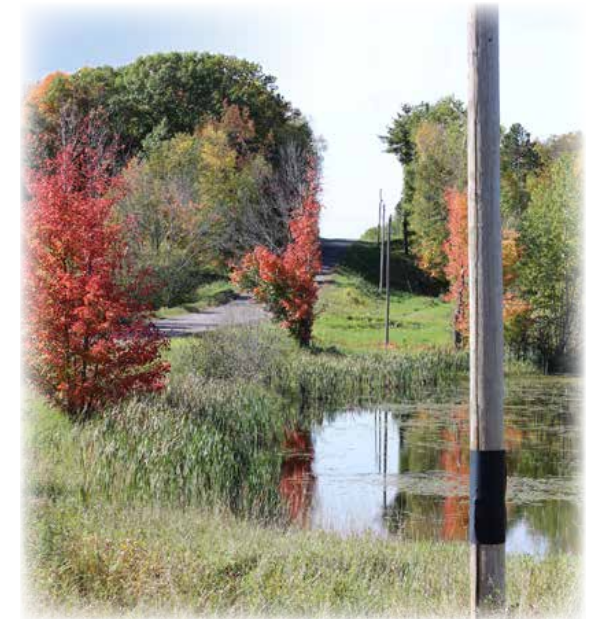
*A clear right-of-way improves power quality, reliability and safety.*



A **minimum** of 15 feet of clearance is required on EACH SIDE of the top wire and 20 feet at the ground line on EACH SIDE of the pole. Also, the removal of danger trees and leaning trees will be considered. ROW may be cleared 20 feet, ground to sky.

Barron Electric Cooperative  
1434 State Highway 25 North  
P.O. Box 40  
Barron, WI 54812  
Or call:  
Barron: 715•537•3171  
Or toll-free 800•322•1008  
[www.barronelectric.com](http://www.barronelectric.com)

## Barron Electric's Right-of-Way Clearing & Planting Guide



**BARRON**  
**Electric**  
COOPERATIVE - BARRON, WISCONSIN

A Touchstone Energy® Cooperative



## Keeping the Lines Clear

The Right-of-Way (ROW) Clearing Program helps reduce contact between trees and power lines. Trees and vegetation growing into the right-of-way can:

- Cause power outages
- Cause lights to blink
- Block access for maintenance and repairs
- Waste electricity by drawing it to the ground
- Become a fire hazard
- Become a safety hazard

Contractors clear trees and brush in sixty-one townships on a rotational schedule every five to six years. This may include mechanical chopping, hand-cutting and side-trimming. **No chemicals are used.** Cutting and trimming is done by trained, professional utility tree trimmers. Only primary lines are cleared, which supply power to the transformer that serves your location. The following year, Barron Electric line crews perform routine line patrol and trim trees or branches as needed along secondary wires between the transformer and your meter.

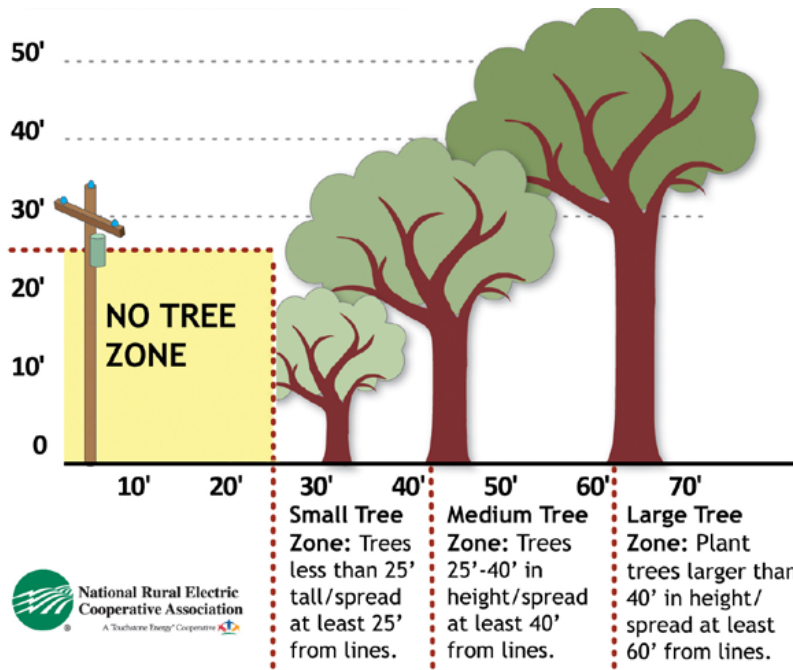
If you have trees that are growing into power lines, contact Barron Electric at 800-322-1008. Never try to cut or trim them yourself.



### Can Power Lines be Buried?

In some situations, overhead power lines may be reconstructed underground for a fee. Contact the cooperative regarding costs, easements, and other requirements.

## Tree Planting Guide



*Keep areas around electric meters, transformers or other electrical equipment free of any vegetation that could limit utility service access.*

### Suggested Varieties: Shrubs (Height 4'-10')

Arrowwood  
Azalea  
Burning Bush  
Bush Honeysuckle  
Cranberry Bush  
Currant  
Dogwoods  
Hydrangea  
Juneberry  
Lilac

### Small-Medium Trees Height 10'- 40'

Canada Cherry  
Eastern Red Cedar  
Flowering Crabapple  
Flowering Dogwood  
Hawthorn  
Ironwood

### Large Trees (Height 40'+)

Amur, Sugar, Red, Silver Maples  
Blue Spruce  
Oak  
Ash  
Red/Scotch Pine

## Safety First

Since trees and brush contain water, they can conduct electricity, and could be fatal to someone who comes in contact. A spark from trees or brush touching power lines can cause fires, especially during dry weather. Members should stay clear of downed power lines.



Dial 811 or  
(800) 242-8511  
DiggersHotline.com

## What Happens to the Cut Wood and Chips?

Logs are the property of the landowner. Branches and small debris are left to decompose where they are cut. In maintained yards, branches and small debris are chipped and removed unless otherwise requested by the member, or arrangements for removal are made with the member.

*We need all members' cooperation to keep a minimum of 20 feet cleared on either side of the overhead power lines.*