

# Barron Electric's Load Management Program

Barron Electric Cooperative utilizes an energy conservation technique called load management. Load is the measure of demand placed by consumers on an electric system at any given time. The load management program is a tool used to balance electrical supply and demand. The goal is to keep the amount of electricity used in balance with the amount of power generated.

## How Does Load Management Work?

Dairyland Power Cooperative, Barron Electric's wholesale power supplier, joined the Midwest Independent System Operator (MISO) in June 2010. Today, Dairyland sells all of the power from its generation resources into the MISO market and purchases all of its energy requirements from MISO based on market prices. The MISO system experiences the greatest demand for electricity during the afternoon in the summer. Peak alert periods will be affected by weather conditions across the entire MISO region and could occur on days when local weather conditions are not extreme.

## Residential Radio Control Strategies

### 50-Gallon Water Heater Strategy (1A)

Interrupted for a maximum of 4 hours in a 10 hour period, as needed.

### 85-Gallon (1B), 105-Gallon Water Heater Strategy & Storage Heat Strategy (ETS) (3)

#### Winter (Approximate Times)

Interrupted 5:30 a.m. until 1:30 p.m.  
 On from 1:30 p.m. - 3:30 p.m.  
 Interrupted from 3:30 p.m. - 10:00 p.m.  
 On from 10:00 p.m. - 5:30 a.m.

#### Summer (Approximate Times)

On from 8:30 p.m. - 11:30 a.m.  
 Interrupted from 11:30 a.m. - 8:30 p.m.

*This strategy is not interrupted on weekends or holidays, except during full load control events.*

### Dairy Water Heater Strategy (4A)

Interrupted for 4 hours as needed

### Central Air Conditioning Strategy (2C, 2S)

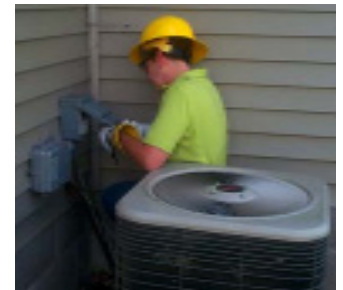
The air conditioner will be cycled, 15 minutes on and 15 minutes off, during peak times.

### Dual Fuel Strategy (2A, 2B, 2C, 2W)

Interrupted for a maximum of 12 hours in a 24 hour period. Usually not longer than 6 hours at a time.

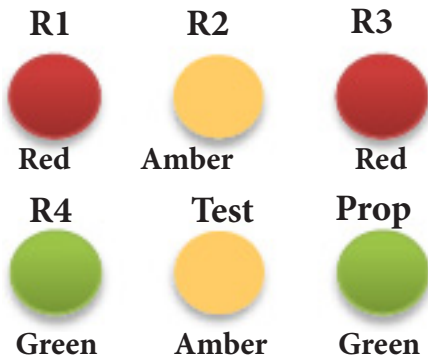
### 4 Hour-Off Strategy (4B)

Interrupted for a maximum of 4 hours in a 6 hour period on a as needed basis.



*Typical peak alert times in the summer are from 1:00 p.m. until 5:00 p.m.*

## Load Management Radio Receiver Model 305/306



Red light on (R1): Water Heater Interrupted  
 Amber light on (R2): Dual Fuel - Electric Heat Interrupted  
 Red light on (R3): Electric Storage Heating Interrupted  
 Green light on (R4): Control Alert  
 Green light (Prop) Receiver is operating properly  
 Prop light is on 5:30 a.m. to 11 p.m.  
*If you are out of hot water, please check your circuit breaker, fuse or reset button on water heater before calling BEC.*



Barron: 537-3171  
 Toll-free: 1-800-322-1008  
[www.barronelectric.com](http://www.barronelectric.com)



Your Touchstone Energy® Cooperative

For load status information, visit Barron Electric's website at [www.barronelectric.com](http://www.barronelectric.com). Click on the Energy Information tab and then click on load status. Barron Electric appreciates your participation in the load management program!